

MT 52

Thermostatic Mixing Valve



Application

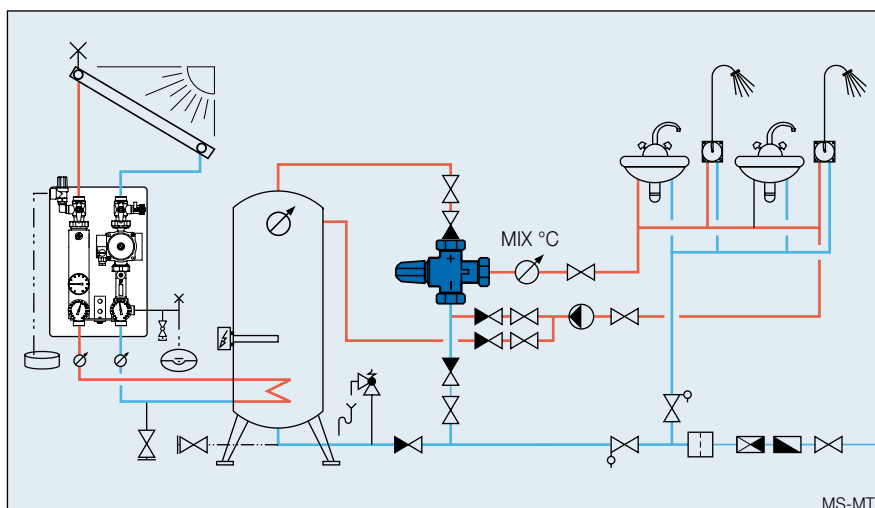
Limits and maintains constant levels of mixing temperatures in systems

The thermostatic valve ensures a constant temperature of the mixed water at the outlet.

The mixing valve can be used with different types of storage and instant water heaters for heating and sanitary (washbasins, baths, showers) applications.

Advantages

- Constant temperature of the water at the outlet
- Infinite regulation of the nominal temperature in 2 ranges
20–40 °C / 30–70 °C
- Special design with anti-scalding device
- Pipes and draw-off fittings are protected against calcification and corrosion
- System components:
check valves, connections and accessories



Operation

Standard design:

A thermostatic cartridge and a return spring ensure the constant blend temperature at the outlet. Thanks to the design of the mixing valve, the thermostatic cartridge can be easily replaced in the installed valve if the performance decreases, which occurs due to normal wear and tear.

Special design:

In the case of cold water failure, the hot water supply shuts off automatically and hermetically.

MT 52 Thermostatic Mixing Valve



Technical data

Valve housing and internal components in brass, resistant to dezincification, anti-limescale treatment

Seals: EPDM

Specification text

Thermostatic mixing valve Standard, brass, resistant to dezincification, with anti-limescale treatment

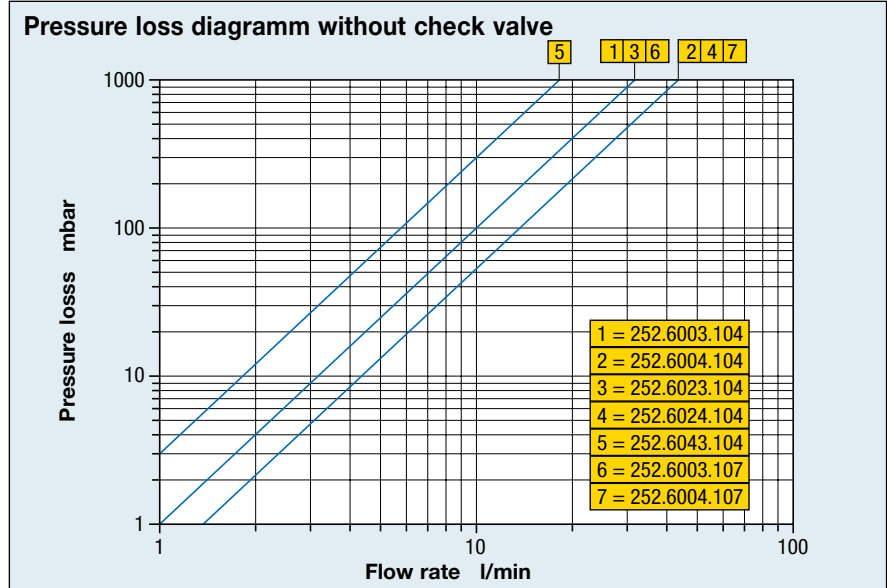
Seals: EPDM

Max. operating temperature (TB)

see "Type programme".

Max. operating pressure (PB) 10 bar

Thermostatic mixing valve Special, with protection against scalding (other characteristics as Standard)



Type programme: Thermostatic mixing valve Standard for storage water heater

Item no.	DN	G	Temp. range	TB	E (l/min)	k_{vs} 1	k_{vs} 2	Features
252.6003.104	20	1"	30 – 70 °C	100 °C	39	1.9	1.65	–
252.6004.104	25	1 ¼"	30 – 70 °C	100 °C	53	2.6	2.25	–
252.6023.104	20	1"	20 – 40 °C	80 °C	39	1.9	1.65	–
252.6024.104	25	1 ¼"	20 – 40 °C	80 °C	53	2.6	2.25	–

Type programme: Thermostatic mixing valve Standard for instant water heater

252.6043.104	20	1"	30 – 70 °C	100 °C	22	1.1	0.7	–
--------------	----	----	------------	--------	----	-----	-----	---

E = extracted (outlet) quantity at $\Delta p = 1.5$ bar

k_{vs} 1 = without check valve

k_{vs} 2 = with check valve

Type programme: Thermostatic mixing valve Special, hermetic, for storage water heater

Item no.	DN	G	Temp. range	TB	E (l/min)	k_{vs} 1	k_{vs} 2	Features
252.6003.107	20	1"	30 - 70 °C	100 °C	39	1.9	1.65	●
252.6004.107	25	1 ¼"	30 - 70 °C	100 °C	53	2.6	2.25	●

● = protection against scalding, shuts off hermetically

Accessories check valves TB 95 °C, PB 10 bar

Item no.	fits to item no.:
296.5203.003	252.6003.xxx / 252.6023.104 / 252.6043.104
296.5204.003	252.6004.xxx / 252.6024.104

To be mounted in the warm and cold water inlet



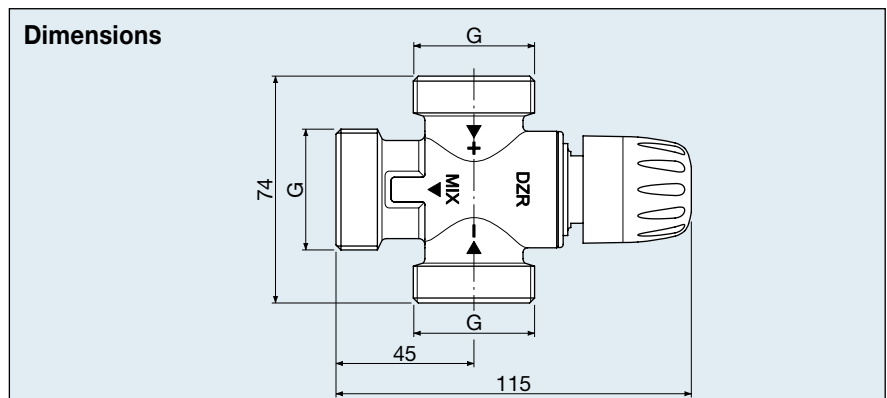
Check valve

Insert cylindrical part in the valve for size DN20.

Insert cylindrical part in the pipe for size DN25.

Note the direction of the arrow on the check valve.

Spare parts: Thermostat unit for mixing valves



Subject to modification. M-MT 10/05 e